

**Personal  
Care**

**Performance  
Meets  
Beauty**

***SNF***

SNF, headquartered in Andrézieux, France, is a **leading global producer of water-soluble polymers** with manufacturing sites in Andrézieux (France); Riceboro, Georgia (USA); and Taixing (China). In 2023, SNF had a turnover of approximately € 4.5bn.

Over the last 40 years, SNF has developed expertise in **polymer chemistry** designed for specific markets. In Personal Care, SNF offers a wide range of polymers such as **rheology modifiers, thickeners,** and **film formers** to cover the needs of this market.

SNF uses the newest polymerization technologies for synthesizing and manufacturing anionic, cationic, amphoteric, and nonionic polymers. As an added advantage, SNF is back-integrated in the most strategic monomers to better serve our customers regarding **product costs, quality,** and **supply.**

This know-how in monomers, polymer design, and industrial process applications allows SNF to **react and innovate** to the changing trends and customer needs within the **cosmetic market.**



# SNF | Global Leader in Water-Soluble Polymers

To consolidate its position as a leader, SNF constantly expands its range of products and technologies through continuous investments in R&D. We also reinvest significant financial resources into improving and expanding our manufacturing assets to enable us to produce as close as possible to end-markets and users.

  
**4.5 bn€**  
Sales Turnover

Global Overview



**8 150**  
Employees

  
**1717**  
Active Patents

Innovation



**2**  
ISCC+  
Certified Plants

\*ISCC+, International Sustainability and Carbon Certification process, guarantees full traceability of the materials along the value chain.



**21 Production Sites Worldwide**

## Our Activities:



Water Treatment



Oil & Gas



Mining



Paper



Agriculture



Textiles



Construction & Civil Engineering



Home & Personal Care

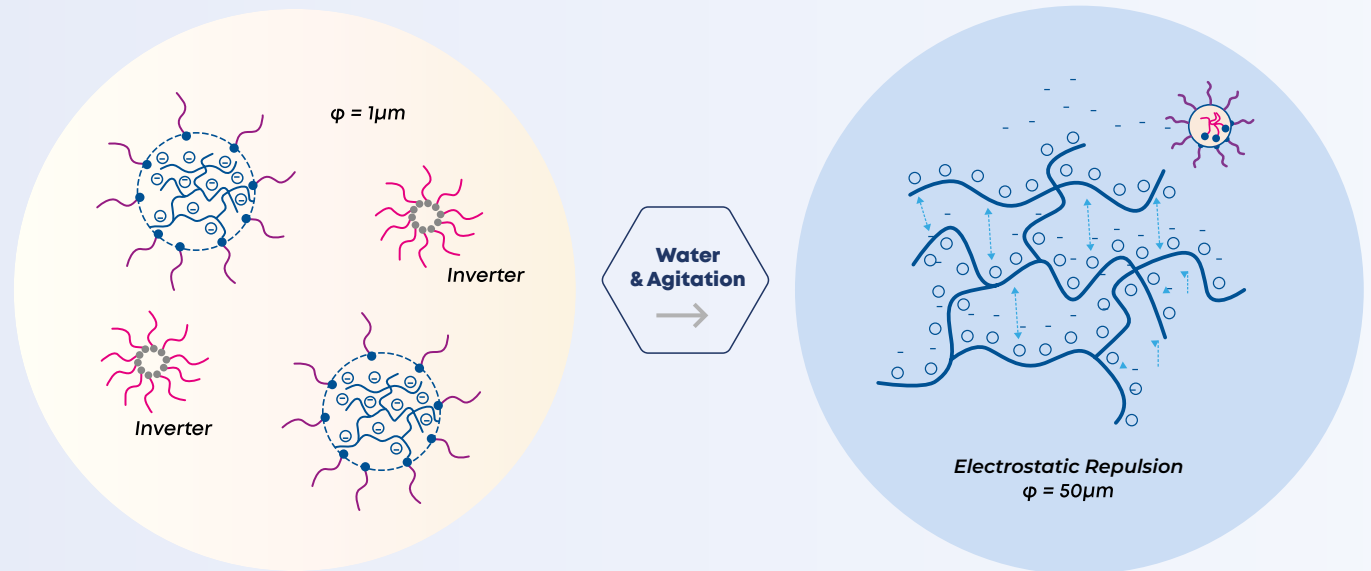
# Rheology Modifiers

SNF Personal Care offers a wide range of rheology modifiers, thickeners, and film formers that provide thickening, conditioning, suspending effects, as well as various sensorial secondary benefits such as rich feel, glossy texture, and freshness for Skin Care, Hair Care, and Bath & Shower products.

## Liquid Dispersion Polymers

LDPs (Liquid Dispersion Polymers) are water-in-oil emulsions where the water droplets act as microreactors in which the polymer is synthesized.

An oil-in-water emulsifier (surfactant) allows the Liquid Dispersion to invert once in water phase. Water is absorbed by the polymer which swells and builds viscosity.



## Sustainable Process: Carbon Footprint Improvement

Using **SNF cold-processable inverse emulsions** help **save time and energy** in manufacturing skincare formulas.



**70%**  
**MANUFACTURING  
TIME SAVED**



**96%**  
**EQUIVALENT CO<sub>2</sub>  
EMISSIONS SAVED**

*Compared to hot-processable conventional emulsifying system*

# Carbon Neutral by 2050

With 21 production facilities and subsidiaries in more than 55 countries, SNF Group is the world leader in water chemistry. As a leader in our industry, **we are responsible for addressing the planet's environmental challenges by going even further and working faster to strengthen water chemistry's ethical dimension.**

## How to Achieve?



<sup>1</sup> ISCC+, International Sustainability and Carbon Certification process, guarantees full traceability of the materials along the value chain.

<sup>2</sup> Compares to our peers, based on 2022 CO<sub>2</sub> emissions (Scope 1+2) in tons per M€ sales.

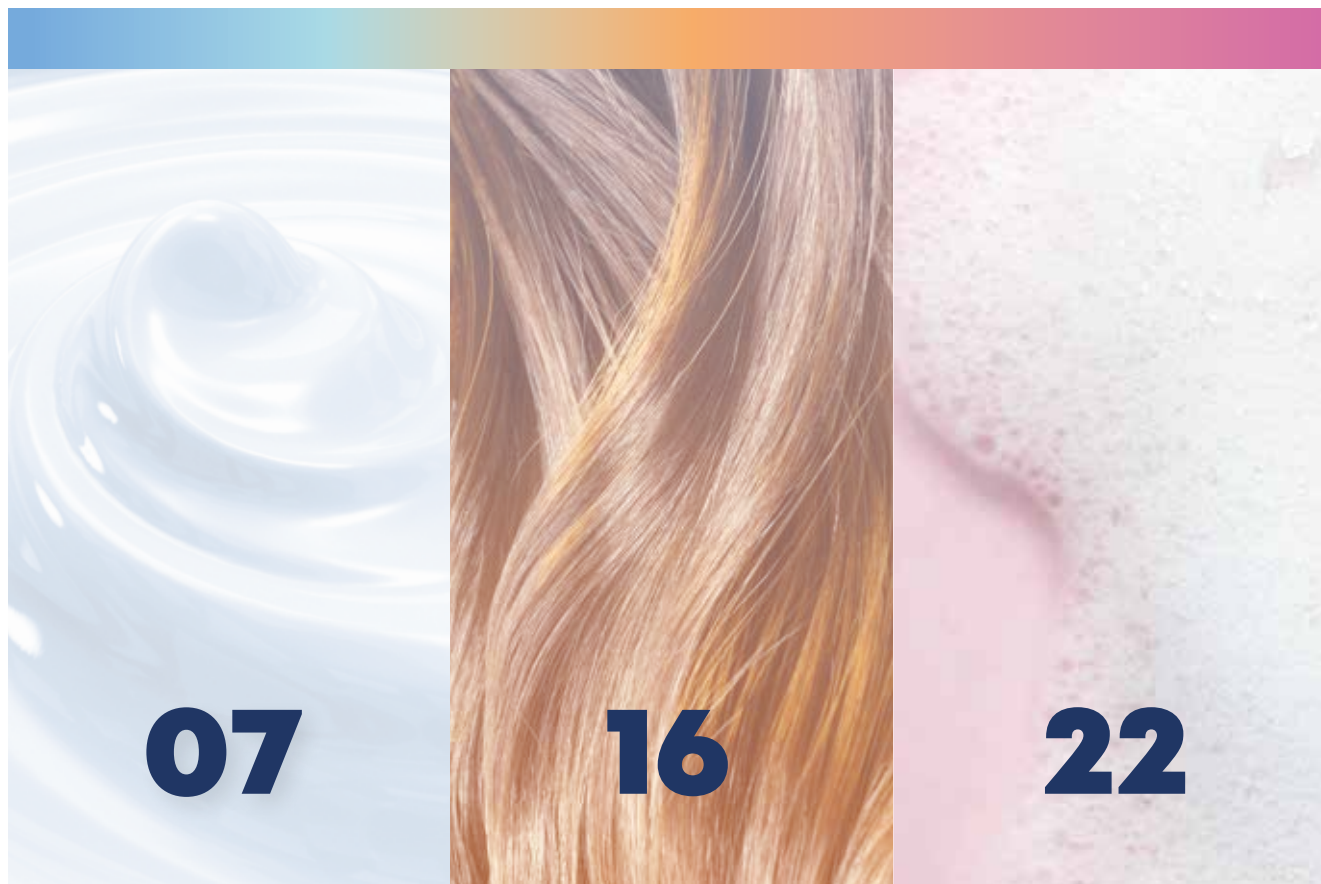
<sup>3</sup> Compares to our peers, based on 2022 Water Consumption in m<sup>3</sup> per M€ sales.

# | Index

**Skin Care**

**Hair Care**

**Bath & Shower**



**07**

**16**

**22**



# **Skin Care**

# Achieving the Best Textures with SNF Inverse Emulsion Polymers



**FLOCARE™ ET, FLOCARE™ ES, FLOCARE™ PSD, and NATURSOL™ EMI** are Liquid Dispersion Polymers (LDPs) produced by inverse emulsion polymerization. With this process, it is possible to achieve very high molecular weight, cross-linked polymers with optimized rheological properties. SNF offers a wide range of products from low to highly concentrated thickeners.

**NATURSOL™ EMI Lite** is a readily biodegradable polymer with 78% of natural origin (ISO 16128). It perfectly balances sustainability and performance.

**NATURSOL™ EMI 132** is 67% of natural origin and 100% Vegan.

SNF also offers rheology modifiers in powder form, such as **FLOCARE™ PSD 30**.

**FLOCARE™ SK** polymers are obtained by precipitation. These polymers are ready to use and provide transparent and viscous cold-process formulations.

**FLOCARE™ SK 425** delivers transparency and high electrolyte resistance.







**FLOCARE™ SK 403** provides both transparency and high-viscosity formulas at low concentrations.

## *Benefits :*

- Multifunctional rheology modifiers: **thickening, stabilizing, and texturizing**
- Low to high concentrated thickeners can be added at any stage
- **Self-emulsifier:** additional surfactants not needed for stable formulations up to 30% oil
- Suspending properties
- **Ready & easy-to-use:** pre-neutralized liquid or powder
- Can be used in **cold** or **hot** process
- Compatible over a wide pH range
- Allows for formulations from sprays to creams
- Delivers **sensorial benefits** (freshness, hydration, softness)



# Liquid Dispersion Polymers - Anionic

Product	INCI Name	% Active	Optimal pH Range	Applications and Uses
 <b>NATURSOL™ EMI Lite</b>	Proprietary 	57	5-10	Readily biodegradable polymer, 78% naturally derived. Light texture, fresh touch, and soft after-feel.
<b>PATENT PENDING</b>				
 <b>NATURSOL™ EMI 132</b>	Sodium Acrylate/Sodium Acryloyldimethyl Taurate Copolymer, C15-19 Alkane, Lauryl Glucoside	33	5-12	67% naturally derived. Formulate with natural index close to 100%. Light texture, fresh touch, and soft after-feel.
 <b>FLOCARE™ ET 100</b>	Sodium Polyacrylate, Ethylhexyl Stearate, Trideceth-6	60	6-11	Glossy, fast absorption, soft and non-tacky after-feel, good consistency, and pick-up. Long lasting moisturization.
 <b>FLOCARE™ ET 76</b>	Sodium Polyacrylate, Hydrogenated Polydecene, Trideceth-6	57	6-11	Glossy, fast absorption, extra soft and non-tacky after-feel, good consistency and pick-up. Long lasting moisturization.
 <b>FLOCARE™ ET 36 V</b>	Sodium Acrylate/Sodium Acryloyldimethyl Taurate Copolymer, Hydrogenated Polydecene, Trideceth-6, Sorbitan Laurate	52	3-12	Soft skin after-feel. Used in anti-aging or anti-acne creams.
<b>FLOCARE™ ES 502</b>	Sodium Polyacrylate, Mineral Oil, Trideceth-6	50	6-11	Rich texture with a powdery feel. High electrolyte stability. Can be used in sunscreen formulations.
<b>FLOCARE™ ET 30</b>	Sodium Acrylate/Sodium Acryloyldimethyl Taurate Copolymer, Mineral Oil, Trideceth-6	58	3-11	Glossy, light, and soft skin feel with velvety effect. Good electrolyte stability.
<b>FLOCARE™ ET 305</b>	Polyacrylamide, C13-14 Isoparaffin, Laureth-7	40	3-10	Good electrolyte stability, soft ,and smooth skin feel with velvety effect.

Recommended dosage for inverse emulsion polymers in formulations: 2 to 4% as supplied.



**Considered naturally derived (ISO 16128-2:2017)**



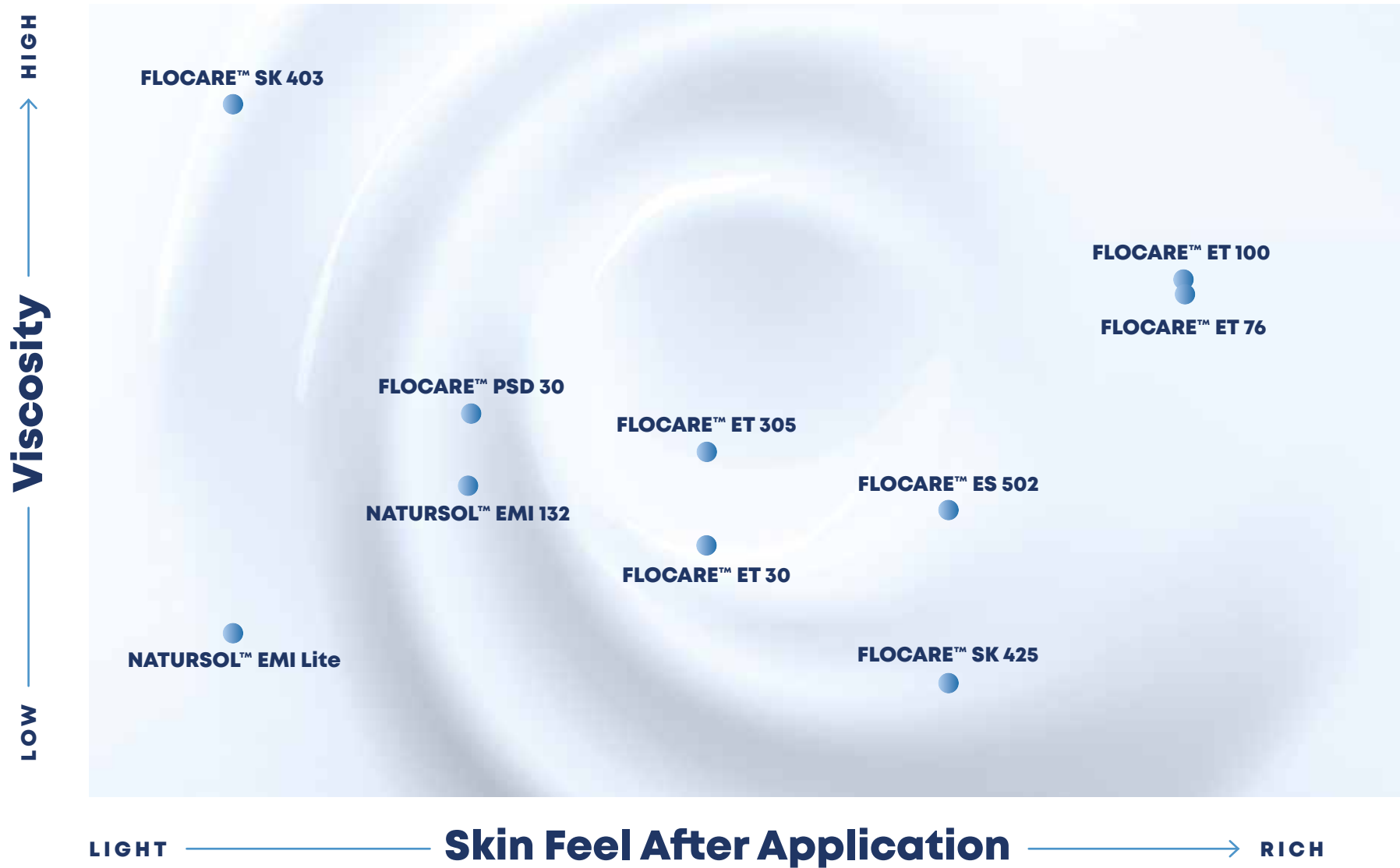
**Contains natural ingredients**

# Powder Polymers - Anionic

Product	INCI Name	% Active	Optimal pH Range	Applications and Uses
<b>FLOCARE™ PSD 30</b>	Sodium Acrylate/Sodium Acryloyldimethyl Taurate Copolymer	> 85	3-11	Light and melting textures. Non-tacky and non-greasy, suitable for serum and hydro-alcohol gels.
<b>FLOCARE™ SK 425</b>	Ammonium Polyacryloyldimethyl Taurate	> 92	4-8	Gelling agent for crystal clear formulations. Delivers extreme resistance to electrolytes, provides foam stabilization, and ultra-soft after-feel. Recommended for medium viscosity. Ability to develop stable formulas in the absence of emulsifier.
<b>FLOCARE™ SK 403</b>	Ammonium Acryloyldimethyl Taurate/VP Copolymer	> 92	4-8	Gelling agent for crystal clear formulations. Delivers high viscosity and light, non-sticky after-feel. Texturizer and viscosity booster for oil-in-water emulsion. Ability to develop stable formulas in the absence of emulsifier.

*Recommended dosage for powder polymers: 0.5 to 2% as supplied.*

# Sensory Profile Overview



## Moisturizing Cream

SNF - SK 006

Commercial Name	INCI	Wt.%
Demineralized Water	Water (Aqua)	QSP 100
Glycerin	Glycerin	2.00
Preservative		qs
Natura Tec Ultrafeel™ AL <sup>1</sup>	C12-15 Alkyl Lactate	3.00
Natura Tec Abysoft™ <sup>1</sup>	Crambe Abyssinica Seed Oil Phytosterol Esters	2.00
Massocare MCT MB <sup>2</sup>	Caprylic/Capric Triglyceride	2.00
Sweet Almond Oil - Refined <sup>1</sup>	Prunus Amygdalus Dulcis Oil	2.00
Tocobiol® C <sup>2</sup>	Tocopherol (mixed), Beta-Sitosterol, Squalene	0.05
<b>FLOCARE™ ET 76<sup>3</sup></b>	<b>Sodium Polyacrylate, Hydrogenated Polydecene, Trideceth-6</b>	<b>2.00</b>

Suppliers: <sup>1</sup>Natura-Tec; <sup>2</sup>CQ Masso; <sup>3</sup>SNF

## Arctic Blue Serum

SNF - SK 008

Commercial Name	INCI	Wt.%
Demineralized Water	Water (Aqua)	QSP 100
Geogard® ECT <sup>1</sup>	Benzyl Alcohol, Salicylic Acid, Glycerin, Sorbic Acid	0.80
Sodium Hydroxide (10% aqueous solution)	Water, Sodium Hydroxide	qs pH 6.5
Glycerin	Glycerin	3.00
<b>NATURSOL™ EMI 132<sup>2</sup></b>	<b>Sodium Acrylate/Sodium Acryloyldimethyl Taurate Copolymer, C15-19 Alkane, Lauryl Glucoside</b>	<b>2.80</b>
Cetiol® C5 <sup>3</sup>	Coco-Caprylate	5.00
Tocobiol® C <sup>4</sup>	Tocopherol (mixed), Beta-Sitosterol, Squalene	0.05
Revivyl™ <sup>5</sup>	Propanediol, Orobanchae Rapum Extract	0.30
Hydrintense™ <sup>5</sup>	Sea Water, Propanediol, Porphyridium Cruentum Extract	0.50
Food color Brilliant Blue FCF 85% (0.1% solution)	Water, CI 42090	0.05
Fresh Hydration <sup>5</sup>	Parfum	0.11

Suppliers: <sup>1</sup>Lonza; <sup>2</sup>SNF; <sup>3</sup>BASF; <sup>4</sup>CQ Masso; <sup>5</sup>Givaudan

## Precious Gelée

### SNF - SK 012

Commercial Name	INCI	Wt.%
Badoit	Water (Aqua)	QSP 100
Cristalhyal <sup>®1</sup>	Sodium hyaluronate	0.05
<b>FLOCARE™ SK 425<sup>2</sup></b>	<b>Ammonium Polyacryloyldimethyl Taurate</b>	<b>2.50</b>
Butylene Glycol	Butylene Glycol	1.00
Ajidev <sup>®</sup> NL-50 <sup>3</sup>	Sodium PCA	2.00
Lincoserve™ WpH-LO <sup>4</sup>	Pentylene Glycol, Propanediol, Caprylyl Glycol, Ethylhexylglycerin	0.80
Food color Brilliant blue FCF 85% (0.1% solution)	Water, C.I. 42090	0.07
Solubilisant LRI <sup>5</sup>	PPG-26 Buteth-26, PEG-40 Hydrogenated Castor Oil, Water	0.40
Aqua Azur <sup>6</sup>	Parfum	0.07
Hydrintense™ <sup>1</sup>	Sea Water, Propanediol, Porphyridium Cruentum Extract	1.20
Citric acid (50% solution)	Water, Citric Acid	qs pH 5.5

Suppliers: <sup>1</sup> Givaudan; <sup>2</sup> SNF; <sup>3</sup> Ajinomoto; <sup>4</sup> Lincoln Manufacturing; <sup>5</sup> Sensient Beauty; <sup>6</sup> Firmenich;

## Cold-Process Mineral SPF 50 +

### SNF - SK 020



Commercial Name	INCI	Wt.%
Demineralized Water	Water (Aqua)	QSP 100
Edeta BD <sup>1</sup>	Disodium EDTA	0.05
Glycerin	Glycerin	2.00
Keltrol <sup>®</sup> CG-SFT <sup>2</sup>	Xanthan Gum	0.40
Eumulgin <sup>®</sup> SG <sup>1</sup>	Sodium Stearoyl Glutamate	1.00
Zemea <sup>®</sup> Propanediol <sup>3</sup>	Propanediol	5.00
Cetiol <sup>®</sup> CC <sup>1</sup>	Dicaprylyl Carbonate	5.00
Massocare MCT MB <sup>4</sup>	Caprylic/Capric Triglyceride	2.00
Phenoxyethanol	Phenoxyethanol	1.00
UV cut TiO2 60 VL <sup>5</sup>	Titanium Dioxide, Coconut Alkanes, Polyhydroxystearic Acid, Stearic Acid, Alumina, Coco-Caprylate/Caprate	15.00
UV cut ZnO 72 NU <sup>5</sup>	Zinc Oxide, Coconut Alkanes, Polyhydroxystearic Acid, Coco-Caprylate/Caprate, Dimethicone	25.00
Liposorb™ L-20 <sup>6</sup>	Polysorbate 20	1.00
Liposorb™ O <sup>6</sup>	Sorbitan Oleate	0.50
Dispersun DSP-OL100 <sup>7</sup>	Polyhydroxystearic Acid	3.00
Gransurf 90 <sup>5</sup>	Cetyl PEG/PPG-10/1 Dimethicone	1.00
<b>NATURSOL™ EMI 132<sup>8</sup></b>	<b>Sodium Acrylate/Sodium Acryloyldimethyl Taurate Copolymer, C15-19 Alkane, Lauryl Glucoside</b>	<b>4.00</b>

Suppliers: <sup>1</sup> BASF; <sup>2</sup> CP Kelco; <sup>3</sup> Dupont Tate & Lyle BioProducts; <sup>4</sup> Coast Southwest; <sup>5</sup> Grant Industries; <sup>6</sup> Vantage; <sup>7</sup> Innospec; <sup>8</sup> SNF



## After-Sun Refreshing Body Gel

SNF - SK 027

Commercial Name	INCI	Wt.%
Demineralized Water	Water (Aqua)	QSP 100
Dissolvine NA2	Disodium EDTA	0.05
Glycerin	Glycerin	2.00
<b>FLOCARE™ SK 403<sup>1</sup></b>	<b>Ammonium Acryloyldimethyl Taurate/VP Copolymer</b>	<b>1.00</b>
Ethanol	Alcohol	10.0
Solubilisant LRI <sup>2</sup>	PPG-26-Buteth-26, PEG-40 Hydrogenated Castor Oil, Water	1.00
Frescolat® ML <sup>3</sup>	Menthyl lactate	0.10
Euxyl PE9010 <sup>4</sup>	Phenoxyethanol, Ethylhexylglycerin	0.80
NaOH (5% aqueous solution)	Water, Sodium Hydroxide	qs pH 5.5-6.0
Cosmetic Bioglitter® Opal Mint 008 <sup>5</sup>	Rayon, Glycerin (Plant Derived), Aqua, Urea, Shellac, Synthetic Fluorphlogopite, Titanium Dioxide, CI 77491, Tin Oxide, Silica	qs

Suppliers: <sup>1</sup>SNF; <sup>2</sup>Sensient Beauty; <sup>3</sup>Symrise; <sup>4</sup>Schülke; <sup>5</sup>Miyoshi Europe

## Daily Cold-Process Tinted SPF

SNF - SK 029 B

Commercial Name	INCI	Wt.%
Demineralized Water	Water (Aqua)	QSP 100
Keltrol CG SFT <sup>1</sup>	Xanthan Gum	0.50
EDETA BD	Disodium EDTA	0.05
Glycerin	Glycerin	2.00
Massocare MCT MB <sup>2</sup>	Caprylic/Capric Triglyceride	2.00
Zemea® Propanediol <sup>3</sup>	Propanediol	3.00
Parleam® 4 <sup>4</sup>	Hydrogenated Polyisobutene	5.00
Linatural™ Ultra-1 <sup>5</sup>	1,3 Propanediol, Benzyl Alcohol, Pentylene Glycol	1.80
Ganex™ V-216 <sup>6</sup>	VP/Hexadecene Copolymer	2.00
UV Cut TiO2 60 VL <sup>7</sup>	Titanium Dioxide, Coconut Alkanes, Polyhydroxystearic Acid, Alumina, Coco-Caprylate/ Caprate	20.00
Cremophor® RH40 <sup>8</sup>	PEG-40 Hydrogenated Castor Oil	0.25
<b>NATURSOL™ EMI 132<sup>9</sup></b>	<b>Sodium Acrylate/Sodium Acryloyldimethyl Taurate copolymer, C15-19 Alkane, Lauryl Glucoside</b>	<b>4.00</b>
Unipure Black LC 989 HLC <sup>10</sup>	CI 77499, Hydrogenated Lecithin	0.08
Unipure Yellow LC 182 HLC <sup>10</sup>	CI 77492, Hydrogenated Lecithin	3.84
Unipure Red LC 381 HLC <sup>10</sup>	CI 77491, Hydrogenated Lecithin	0.24
Unipure White LC 981 HLC <sup>10</sup>	CI 77891, Hydrogenated Lecithin	3.84
Covabead Velvet 10 <sup>10</sup>	Polymethyl Methacrylate	1.00

Suppliers: <sup>1</sup>CP Kelco; <sup>2</sup>CQ Masso; <sup>3</sup>Dupont Tate&Lyle BioProducts; <sup>4</sup>Rosow; <sup>5</sup>Lincoln Manufacturing; <sup>6</sup>Ashland; <sup>7</sup>Grant Industries Inc; <sup>8</sup>BASF; <sup>9</sup>SNF; <sup>10</sup>Sensient Beauty

## Mattifying Creamy Gel

SNF - SK 030\*

Commercial Name	INCI	Wt.%
Massocare ININ <sup>1</sup>	Isononyl Isononanoate	4.00
Massocare MCT MB <sup>1</sup>	Caprylic/Capric Triglyceride	4.00
Natura-Tec Plantsil <sup>2</sup>	Hydrogenated Ethylhexyl Oliviate, Hydrogenated Olive Oil Unsaponifiables	4.00
Demineralized Water	Water (Aqua)	76.65
Glycerin	Glycerin	4.00
EDTA Na2	Disodium EDTA	0.05
<b>FLOCARE™ PSD 30<sup>3</sup></b>	<b>Sodium Acrylate/Sodium Acryloyldimethyl Taurate Copolymer</b>	<b>1.50</b>
Cameleon PTW <sup>4</sup>	Titanium Dioxide, CI73360, Aluminum Hydroxide, Boron Nitride, Acrylate/ Ammonium Methacrylate Copolymer, Cellulose Acetate, Propylene Glycol Stearate	4.00
Cameleon Gold <sup>4</sup>	Mica, Iron Oxide (CI 77491), Titanium Dioxide, Acrylate/Ammonium Methacrylate Copolymer, Cellulose Acetate, Propylene Glycol Stearate	1.00
Cosphaderm Dicapo Natural <sup>5</sup>	Caprylyl Glycol, Propanediol, Glycerol Caprylate	0.70
AR788490 - Blue Matcha & Sea Salt <sup>6</sup>	Parfum	0.10

\*Developed by CQ Masso

Suppliers: <sup>1</sup>CQ Masso; <sup>2</sup>Natura-Tec; <sup>3</sup>SNF; <sup>4</sup>Tagra; <sup>5</sup>Cosphatec; <sup>6</sup>CPL Aromas

## Cold-Process Weightless SPF

Face Lotion SNF - SK 031

Commercial Name	INCI	Wt.%
Demineralized Water	Water (Aqua)	QSP 100
Zeastat™ <sup>1</sup>	Caprylhydroxamic Acid, Propanediol	1.00
<b>FLOCARE™ SK 425<sup>2</sup></b>	<b>Ammonium Polyacryloyldimethyl Taurate</b>	<b>0.50</b>
Sunsolv™ BOS <sup>3</sup>	Butyloctyl Salicylate	1.00
BMDM (Avobenzene) <sup>4</sup>	Butyl Methoxydibenzoylmethane	2.50
Neo Heliopan® HMS <sup>5</sup>	Homosalate	9.00
Parsol® EHS <sup>6</sup>	Ethylhexyl Salicylate	4.90
Octocrylene <sup>4</sup>	Octocrylene	9.50
Lexfeel™ N100 MB <sup>1</sup>	Diheptyl Succinate, Capryloyl Glycerin/ Sebacic Acid Copolymer	3.00
SustOleo™ DCS <sup>1</sup>	Diisooctyl Succinate	2.00
Lexgard® O-LO <sup>1</sup>	Caprylyl Glycol	1.00
Zetemol 99 <sup>7</sup>	Isononyl Isononanoate	1.00
Dracorin® GOC <sup>5</sup>	Glycerol Oleate Citrate, Caprylic/Capric Triglyceride	2.00
Alcohol	SD Alcohol 40 B	7.00

Suppliers: <sup>1</sup>Inolex; <sup>2</sup>SNF; <sup>3</sup>Innospec; <sup>4</sup>Sandream Specialties; <sup>5</sup>Symrise;  
<sup>6</sup>Univar solutions; <sup>7</sup>Zschimmer & Schwarz



# **Hair** **Care**

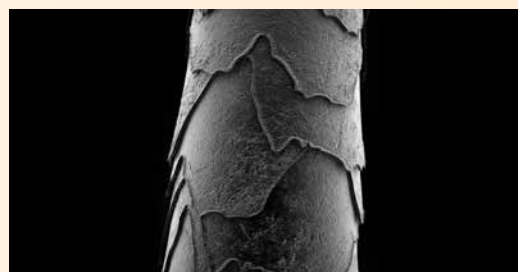




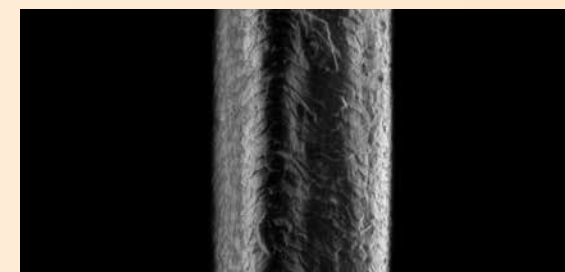
## Conditioning Polymers and Cationic Inverse Emulsions

The **FLOCARE™** range of products is available in liquid (solution) or dry form. Film formers (conditioners) coat hair or skin. When used in hair care, our conditioning polymers add a smooth coating to the surface of the hair. This protective coating provides easier combability and softness.

Untreated Hair (700x)



Hair Treated with FLOCARE™ C 107 LM PF (700x)



## Acrylates Copolymers and Carbomers

Carbomers generate high viscosity at low concentrations while acrylate copolymers help develop crystal clear formulas in a foaming environment. In addition, these polymers suspend solid or liquid particles.

# Conditioning Polymers

Product	INCI Name	% Active	Recommended Dosage (Active %)	Applications and Uses
<b>FLOCARE™ C 106 MV</b>	Polyquaternium-6	39 - 41	0.2 - 0.5	Use in high pH or highly reactive formulations such as bleaches, hair color, or relaxers. This grade is self-preserved.
<b>FLOCARE™ C 107 LM PF</b>	Polyquaternium-7	8.8 - 9.8	0.2 - 0.5	Richness of foam, improvement of combability without build-up. Easy to use compared to PQ-6. Used in shampoos and body wash.
<b>FLOCARE™ C 122 PF</b>	Polyquaternium-22	39 - 43	0.2 - 0.5	Delivers conditioning in extreme pH. Mainly used in hair color, hair dyes, and hair bleach.
<b>FLOCARE™ C 139 PF</b>	Polyquaternium-39	10.2 - 11.5	0.2 - 0.5	Allows rich and thick foam with improved stability. Used in shampoos for damaged hair with good wet and dry combing properties.
<b>NATURSOL™ G 101</b>	Guar Hydroxypropyltrimonium Chloride	100	0.2 - 0.75	Good conditioning effect. Allows deposition of silicone or other oils. Greater foam stabilization in the presence of sebum.
<b>NATURSOL™ G 112</b>	Guar Hydroxypropyltrimonium Chloride	100	0.2 - 0.75	Purified guar derivative providing good conditioning benefits. Particularly recommended in transparent shampoos, body wash, and bath and shower lotions.
<b>NATURSOL™ G 202</b>	Hydroxypropyl Guar Hydroxypropyltrimonium Chloride	100	0.2 - 0.75	Enables the creation of transparent formulations. This guar is designed for high conditioning and it improves wet and dry combability. Brings excellent foam density.
<b>NEW NATURSOL™ PQ 10 LM</b>	Polyquaternium-10	>94	0.2 - 0.75	Compatible with a wide range of anionic, non-ionic, and cationic systems. NATURSOL™ PQ 10 LM and NATURSOL™ G : a duo that elevates the conditioning performance of shampoos without compromising their crystal clear transparency.

# Styling Aids

<b>FLOCARE™ C 111 PF</b> <b>FLOCARE™ C 111 NO</b>	Polyquaternium-11	19 - 21	0.2 - 1	Helps with moisturizing and aids in styling. Recommended for mousses and creams.
--	-------------------	---------	---------	--

# Rheology Modifiers

Product	INCI Name	% Active	Optimal pH Range	Applications and Uses
<b>FLOGEL™ FG 900</b> <b>FLOGEL™ FG 1000</b>	Carbomer	> 95	5 - 10	Efficient thickening and stabilization. Soluble in water and alcohol. Provides high viscosity even at low concentrations (< 1%). Designed for hair sprays or hair styling gels.
<b>FLOCARE™ DE 15A</b>	Acrylates Copolymer	28.5 - 31.5	5 - 7	Suspending, stabilizing, and thickening properties for highly concentrated surfactant, sulfated and non-sulfated formulations. Provides very high transparency at pH 6.5. Enhances intensity of pearlescence.
<b>FLOCARE™ DE 21</b>	Acrylates Copolymer	28 - 32	4 - 6	Suspending, stabilizing, and thickening properties in sulfated and non-sulfated formulations. Allows to develop clear surfactant formulations from acidic to neutral pH.
<b>FLOCARE™ ET 1237 PPI</b>	Polyquaternium-37, Mineral Oil, PPG-1 Trideceth-6	48 - 52	3 - 8	Multifunctional additive to deliver high thickening, conditioning, and straightening properties. Allows formulators to optimize the ingredients used in a cationic system (conditioners).
<b>FLOCARE™ ET 1737 GPG</b>	Polyquaternium-37, Propylene Glycol Dicaprylate/Dicaprate, PPG-1 Trideceth-6	48 - 52	3 - 8	Multifunctional additive to deliver high thickening, conditioning, and straightening properties. Allows formulators to optimize the ingredients used in a cationic system (conditioners).
<b>FLOCARE™ ES 502</b>	Sodium Polyacrylate, Mineral Oil, Trideceth-6	50	6 - 11	Allows hair color formulations. Provides viscosity and a creamy texture.
<b>FLOCARE™ PSD 1037 LV</b>	Polyquaternium-37	> 85	3 - 8	Straightening properties allow conditioning without build-up, especially for damaged fine hair. Recommended if electrolyte stability is required.
<b>FLOCARE™ PSD 1037 XT</b>	Polyquaternium-37	> 85	3 - 8	Suitable for transparent formulations with high yield value. Multifunctional additive to deliver thickening, conditioning, and straightening properties.

Recommended dosage is: 2 to 4% as supplied for FLOCARE™ ET and FLOCARE™ ES range  
 1 to 2% as supplied for FLOCARE™ PSD range  
 7 to 9% as supplied for FLOCARE™ DE 15A and FLOCARE™ DE 21

## Hair Mask

SNF - HC 007

Commercial Name	INCI	Active %
Demineralized Water	Water (Aqua)	QSP 100
<b>FLOCARE™ C 139 PF<sup>1</sup></b>	<b>Polyquaternium-39</b>	<b>0.10</b>
Massocare IPP <sup>2</sup>	Isopropyl Palmitate	3.00
Phenoxyethanol	Phenoxyethanol	0.80
<b>FLOCARE™ ET 1737 GPG<sup>1</sup></b>	<b>Polyquaternium-37, Propylene Glycol Dicaprylate/Dicaprate, PPG-1 Trideceth-6</b>	<b>1.50</b>

Suppliers: <sup>1</sup>SNF; <sup>2</sup>CQ Masso

## Defining Cream

SNF - HC 014

Commercial Name	INCI	Active %
Demineralized Water	Water (Aqua)	QSP 100
Glycerin	Glycerin	2.00
<b>FLOCARE™ PSD 1037 LV<sup>1</sup></b>	<b>Polyquaternium-37</b>	<b>2.00</b>
Jojoba oil	Simmondsia Chinensis Seed oil	3.00
Tocobiol® C <sup>2</sup>	Tocopherol (mixed), $\beta$ -Sitosterol, Squalane	0.05
Phenoxyethanol	Phenoxyethanol	0.80
NaOH (10% aqueous solution)	Water, Sodium Hydroxide	qs pH 5.0

Suppliers: <sup>1</sup>SNF; <sup>2</sup>CQ Masso

## Clear Conditioner

SNF - HC 015

Commercial Name	INCI	Active %
Demineralized Water	Water (Aqua)	QSP 100
<b>NATURSOL™ G 202<sup>1</sup></b>	<b>Hydroxypropyl Guar Hydroxypropyltrimonium Chloride</b>	<b>0.50</b>
<b>FLOCARE™ PSD 1037 XT<sup>1</sup></b>	<b>Polyquaternium-37</b>	<b>1.00</b>
Saealoe Vera Juice <sup>2</sup>	Aloe Barbadensis (Leaf) Juice	3.00
Phenoxyethanol	Phenoxyethanol	0.80
Citric Acid (10% aqueous solution)	Water, Citric Acid	qs pH 4.0

Suppliers: <sup>1</sup>SNF; <sup>2</sup>CQ Masso



## Rebalancing Cleansing Scrub SNF - HC 017

Commercial Name	INCI	Active %
Demineralized Water	Water (Aqua)	QSP 100
	Calendula officinalis flower water	5.00
<b>FLOCARE™ DE 21<sup>1</sup></b>	<b>Acrylates Copolymer</b>	<b>2.40</b>
Texapon NSO BZ <sup>2</sup>	Sodium Lauryl Ether Sulfate	11.50
NaOH (50% aqueous solution)	Water, Sodium Hydroxide	qs pH= 6.6
Amphotensid B4 <sup>3</sup>	Cocamidopropyl Betaine	2.25
SpecKare PO <sup>4</sup>	Piroctone Olamine	0.50
Solution of 2.5% <b>NATURSOL™ G 112<sup>1</sup></b> in water	<b>Guar Hydroxypropyltrimonium Chloride</b>	<b>0.20</b>
Glycerin	Glycerin	0.50
Lincoserve™ WpH-LO <sup>5</sup>	Pentylene Glycol, Caprylyl Glycol, Propanediol, Ethylhexylglycerin	1.00
Citric acid (50% aqueous solution)	Water, Citric Acid	qs pH 4.7-5.0
	Bambusa arundinacea stem extract	0.10

Suppliers: <sup>1</sup>SNF; <sup>2</sup>BASF; <sup>3</sup>Zschimmer & Schwarz; <sup>4</sup>Spec-Chem Industry Inc;  
<sup>5</sup>Lincoln Manufacturing

## Magenta Color Refresh Co-Wash SNF - HC 019

Commercial Name	INCI	Active %
Demineralized Water	Water (Aqua)	QSP 100
Arianor Magenta 306082 <sup>1</sup>	Basic Violet 2	0.02
BergaSoft DG 50 <sup>2</sup>	Decyl Glucoside	1.50
Citric acid (50% aqueous solution)	Water, Citric Acid	qs pH 5.0
<b>FLOCARE™ ET 1737 GPG<sup>3</sup></b>	<b>Polyquaternium-37, Propylene Glycol Dicaprylate/Dicaprate, PPG-1 Trideceth-6</b>	<b>1.50</b>
Cocos Nucifera (coconut) Oil <sup>4</sup>	Cocos Nucifera (coconut) Oil	1.00
Glycerin	Glycerin	1.00
UVINUL A plus B <sup>5</sup>	EthylHexyl Methoxycinnamate, Diethylamino Hydroxybenzoyl Hexyl Benzoate	0.10
Phenoxyethanol	Phenoxyethanol	0.40

Suppliers: <sup>1</sup>Sensient Beauty; <sup>2</sup>Berg & Schmidt; <sup>3</sup>SNF; <sup>4</sup>Bertin; <sup>5</sup>BASF





# **Bath & Shower**

# Conditioning Agents

Product	INCI Name	% Active	Recommended Dosage (Active %)	Applications and Uses
<b>FLOCARE™ C 107 LM PF</b>	Polyquaternium-7	8.8 - 9.8	0.1 - 0.25	Provides rich and creamy foam to bath and shower products with conditioning properties and soft after-feel to the skin.
<b>FLOCARE™ C 122 PF</b>	Polyquaternium-22	39 - 43	0.1 - 0.25	Creates stable, rich, and dense foam to bath and shower products. Provides conditioning properties and soft after-feel to the skin.
<b>FLOCARE™ C 139 PF</b>	Polyquaternium-39	10.2 - 11.5	0.1 - 0.25	Creates stable, rich, and dense foam to bath and shower products. Provides conditioning properties and soft after-feel to the skin.

# Rheology Modifiers

Product	INCI Name	% Active	Optimal pH Range	Applications and Uses
<b>FLOGEL™ FG 900</b> <b>FLOGEL™ FG 1000</b>	Carbomer	> 92	5 - 10	Efficient thickening and stabilization. Soluble in water and alcohol. Provides high viscosity even at concentrations < 1%. Designed for sanitized hand soaps and scrub formulations.
<b>FLOCARE™ SK 425</b>	Ammonium Polyacryloyldimethyl Taurate	> 92	4 - 8	Transparent formulations and exceptional sensory feel. Extreme resistance to electrolytes. Ideal for formulations with active ingredients.
<b>FLOCARE™ DE 15A</b>	Acrylates Copolymer	28.5 - 31.5	5 - 7	Allows transparent shampoo formulations, thickens surfactant bases, and enhances pearlescence and suspension properties.
<b>FLOCARE™ DE 21</b>	Acrylates Copolymer	28 - 32	4 - 6	Suspending, stabilizing, and thickening properties in sulfated and non-sulfated formulations. Allows the development of transparent surfactant formulations from acidic to neutral pH.

## Brightening Facial Cleanser

SNF - SG 004

Commercial Name	INCI	Active %
Deionized Water	Water (Aqua)	QSP 100
AHA fruit acids	Aqua, Vaccinium Myrtillus Fruit Extract, Saccharum Officinarum Extract, Citrus Aurantium Dulcis Fruit Extract, Citrus Limon Fruit Extract, Acer Saccharum Extract	2.00
<b>FLOCARE™ SK 425<sup>1</sup></b>	<b>Ammonium Polyacryloyldimethyl Taurate</b>	<b>2.00</b>
Food color Ponceau 4R 80% (0.10% solution) <sup>2</sup>	Water, CI 16255	0.15
Amphotensid B4/CONC-I <sup>3</sup>	Cocamidopropyl Betaine	4.00
Miranol® Ultra C32 <sup>4</sup>	Sodium Cocoamphoacetate	0.96
Glycerin	Glycerin	3.00
Lincoserve™ WpH-LO <sup>5</sup>	Pentylene Glycol, Propanediol, Caprylyl Glycol, Ethylhexylglycerin	0.80
Solubilisant® LRI <sup>6</sup>	PPG-26 Buteth-26, PEG-40 Hydrogenated Castor Oil, Water	1.00
Pamplemousse rose	Parfum	0.50
Sodium Hydroxide (10% aqueous solution)	Water, Sodium Hydroxide	qs pH 4.5

Suppliers: <sup>1</sup>SNF; <sup>2</sup>Symrise; <sup>3</sup>Zschimmer & Schwarz; <sup>4</sup>Verdant; <sup>5</sup>Lincoln; <sup>6</sup>Sensient Beauty

## Facial Scrub

SNF - SG 005

Commercial Name	INCI	Active %
Deionized Water	Water (Aqua)	QSP 100
<b>FLOCARE™ SK 425<sup>1</sup></b>	<b>Ammonium Polyacryloyldimethyl Taurate</b>	<b>2.00</b>
Protelan™ LS 9011/SL <sup>2</sup>	Sodium Lauroyl Sarcosinate	1.90
Amphotensid B4/CONC-I <sup>2</sup>	Cocamidopropyl Betaine	3.00
Glycerin	Glycerin	3.00
Euxyl® PE 9010 <sup>3</sup>	Phenoxyethanol, Ethylhexylglycerin	0.80
Apricot exfoliator 1000 <sup>4</sup>	Prunus armeniaca (apricot) seed powder	0.30
Solubilisant® LRI <sup>5</sup>	PPG-26 Buteth-26, PEG-40 Hydrogenated Castor Oil, Water	0.30
Crème d'abricot	Parfum	0.13

Suppliers: <sup>1</sup>SNF; <sup>2</sup>Zschimmer & Schwarz; <sup>3</sup>Schülke; <sup>4</sup>Lessonia; <sup>5</sup>Sensient Beauty



## Clear Velvet Body Wash

SNF - SG 006

Commercial Name	INCI	Active %
Deionized Water	Water (Aqua)	QSP 100
Glycerin	Glycerin	1.80
Zetesol LES2/SL <sup>1</sup>	Sodium Laureth Sulfate	8.00
Miranol Ultra C32 <sup>2</sup>	Sodium Cocoamphoacetate	3.00
Euxyl™ PE9010 <sup>3</sup>	Phenoxyethanol, Ethylhexylglycerin	0.80
Citric Acid (50% aqueous solution)	Water, Citric Acid	qs pH 5.0-5.5
<b>FLOCARE™ C 107 LMPF<sup>4</sup></b>	<b>Polyquaternium-7</b>	<b>0.20</b>
Sodium Chloride	Sodium Chloride	0.40

Suppliers: <sup>1</sup>Zschimmer & Schwarz; <sup>2</sup>Verdant; <sup>3</sup>Schülke; <sup>4</sup>SNF



## Sulfate-Free Cleansing Scrub

SNF - SG 007

Commercial Name	INCI	Active %
Demineralized Water	Water (Aqua)	QSP 100
Glycerin	Glycerin	2.00
<b>FLOCARE™ DE 21<sup>1</sup></b>	<b>Acrylates Copolymer</b>	<b>2.40</b>
Protelan LS 9011/SL <sup>2</sup>	Sodium Lauroyl Sarcosinate	6.70
NaOH (50% aqueous solution)	Water, Sodium Hydroxide	qs pH 6.6
Plantacare 818 UP <sup>3</sup>	Coco-Glucoside	3.80
Lincoserve WpH-LO <sup>4</sup>	Pentylene Glycol, Propanediol, Caprylyl Glycol, Ethylhexylglycerin	0.80
Citric acid (50% aqueous solution)	Water, Citric Acid	qs pH 5.5
Celluloscrub 500 blue <sup>5</sup>	Cellulose acetate, CI 74160, glycerin, sodium laureth sulfate, phenylphenol	0.30

Suppliers: <sup>1</sup>SNF; <sup>2</sup>Zschimmer & Schwarz; <sup>3</sup>BASF; <sup>4</sup>Lincoln Manufacturing; <sup>5</sup>Lessonia

# Videos



**NATURSOL™ EMI 132**



**FLOCARE™ SK 425**



**FLOCARE™ PQ 37  
RANGE**





[personalcare.snf.com](https://personalcare.snf.com)

© 2024 SNF. All Rights Reserved.

While SNF makes reasonable efforts to ensure the information is accurate and up-to-date, SNF makes no warranties or representations, express or implied, as to the accuracy, completeness, or any other aspect of the information on this document and assumes no liability in connection with any use of this information. Nothing herein shall be construed as a recommendation or license to use any information found that conflicts with any patent, trademark, or copyright of SNF or others, and SNF makes no representations or warranties, express or implied that any use of this information will not infringe any such patent, trademark, or copyright.



**SNF Group**  
**ZAC de Milieux**  
**rue Adrienne Bolland**  
**42163 Andrézieux Cedex**  
**FRANCE**

**flocare@snf.com**  
**personalcare.snf.com**

SNF Holding Company  
1 Chemical Plant Road  
Riceboro, Georgia 31323  
UNITED STATES of AMERICA

SNF do Brazil Ltda.  
Estrada Bonsucesso  
Itaquaquecetuba, 80  
V Maria de Lourdes  
Guarulhos SP 07251-280  
BRASIL

SNF China Specialty  
Chemicals Division Co.Ltd.  
Room 603, Building 4  
Greenland Qihangguoji,  
Yuxi Road  
Houshayu, Shunyi District  
Beijing, 101300  
CHINA



Supplied by: